

Koson's Prints

... but not in the book

Introduction

One of Japan's most famous designers of flower-and-bird prints is the 20th century artist Koson Ohara. His more than 500 designs for woodblock prints far outnumber those of any of his contemporaries. Many of these woodblock prints are shown in a book about his art, published in 2001. The book's title page is shown on the right. The book's authors note that "only those prints by the artist for which reproducible images were obtainable have been included. This has resulted in the insufficient representation of certain prints and formats such as those in the small souvenir 'postcard' size (c. 140 x 90 mm)". The Reader Collection of Japanese Flower-and-Bird art includes 30 of Koson's smaller print designs which were not in the book. These not-in-the-book prints are the subject of this virtual exhibition. The 30 prints are arranged by size, starting with the smallest. For each print the following information is given: names of the flowers and (or) birds depicted and print size.

Crows, Cranes & Camellias

the natural world of

Ohara Koson 1877-1945

Japanese prints
from the Jan Perrée collection

Amy Reigle Newland

Jan Perrée

Robert Schaap



Hotei Publishing, Leiden

1 Japanese laurel (*Aucuba japonica*) and Java sparrow (*Padda oryzivora*), 75 x 105 mm



2 Heavenly bamboo (*Nandina domestica*) and Eurasian tree sparrow (*Passer montanus*), 90 x 140 mm



3 Cherry (*Prunus* sp.) and green peafowl (*Pavo muticus*), 90 x 140 mm



4 Japanese maple (*Acer palmatum*) and golden pheasant (*Chrysolophus pictus*), 95 x 145 mm



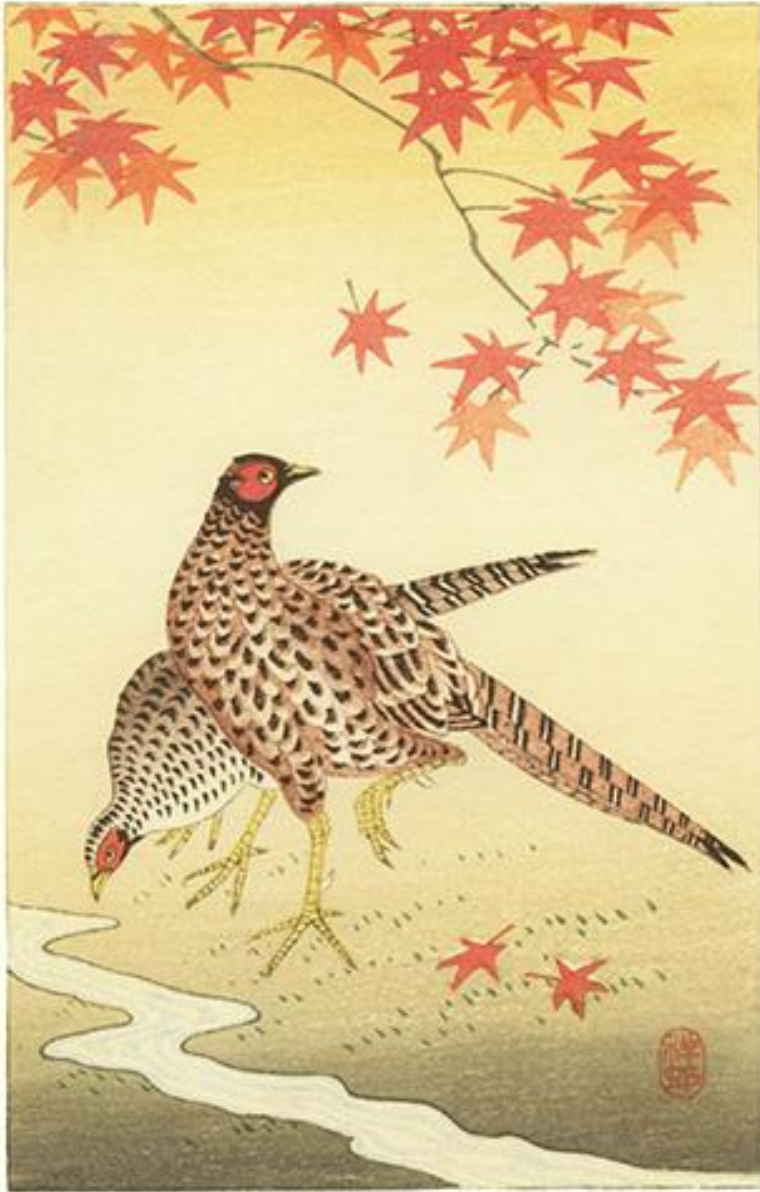
5 Little ringed plover (*Charadrius dubius*), 100 x 155 mm



6 Scops owl (*Otus* sp.), 105 x 155 mm



7 Copper pheasant (*Syrnaticus soemmerringii*), 100 x 145 mm



8 Large-billed crow (*Corvus macrorhynchos*), 105 x 155 mm



9 Cherry (*Prunus* sp.) and Java sparrow (*Padda oryzivora*), 120 x 165 mm



10 Common snipe (*Gallinago gallinago*), 120 x 170 mm



11 White-fronted goose (*Anser albifrons*), 115 x 180 mm



12 Japanese white-eye (*Zosterops japonicus*), 120 x 180 mm



13 Cherry (*Prunus* sp.) and barn swallow (*Hirundo rustica*), 125 x 185 mm



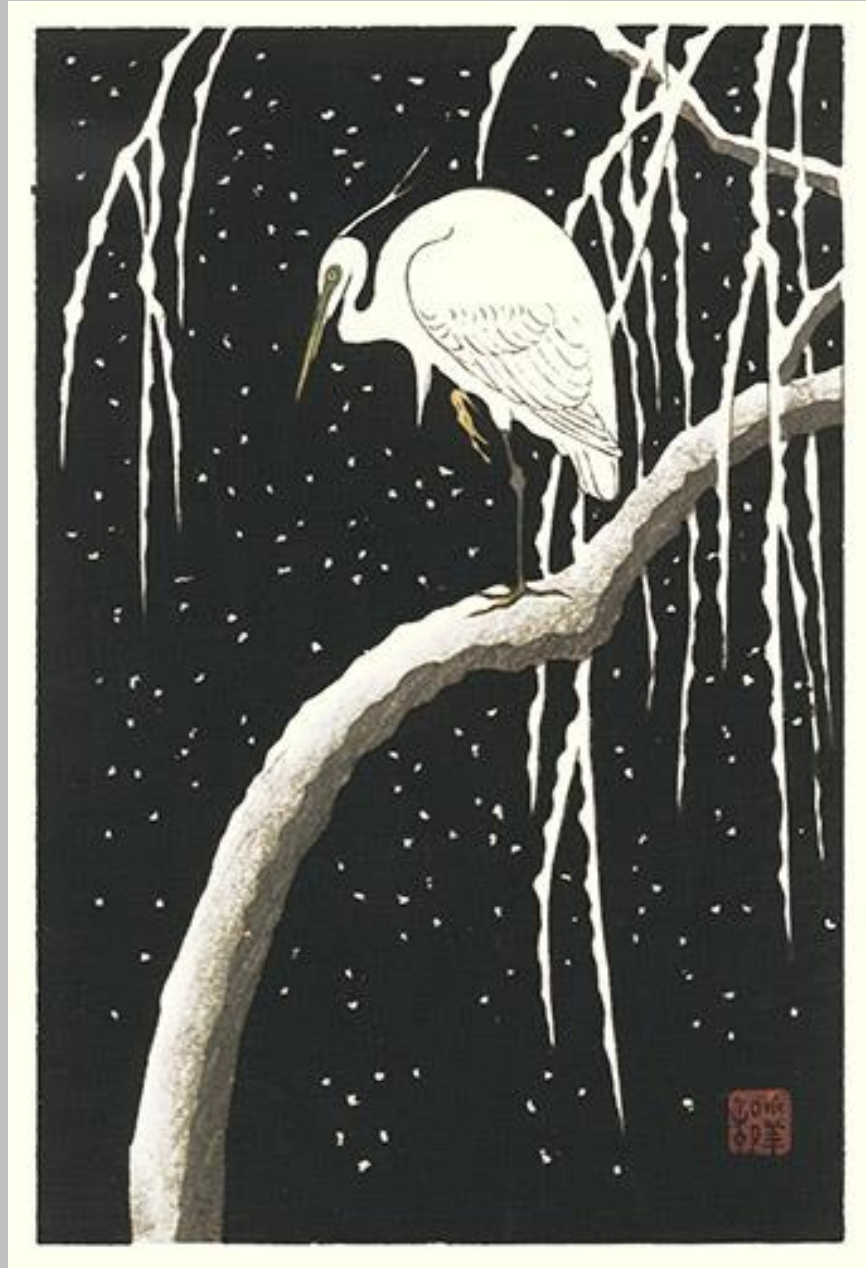
14 Common reed (*Phragmites australis*) and white-fronted goose (*Anser albifrons*), 125 x 185 mm



15 Red-crowned crane (*Grus japonensis*),
95 x 200 mm



16 Little egret (*Egretta garzetta*). 130 x 185 mm



17 White-cheeked starling (*Sturnus cineraceus*), 145 x 205 mm



18 Large-billed crow (*Corvus macrorhynchos*), 150 x 205 mm



19 Mallard duck (*Anas platyrhynchos*), 150 x 210 mm



20 Mallard duck (*Anas platyrhynchos*), 150 x 205 mm



21 Eurasian tree sparrow (*Passer montanus*), 150 x 210 mm



22 Cherry (*Prunus* sp.) and Daurian redstart (*Phoenicurus aureoreus*), 150 x 210 mm



23 Oriental reed warbler (*Acrocephalus orientalis*), 150 x 205 mm



24 Asiatic dayflower (*Commelina communis*) and Japanese quail (*Coturnix japonica*), 150 x 210 mm



25 Pomegranate (*Punica granatum*), scarlet macaw (*Ara macao*) and hyacinth macaw (*Amdorhynchus hyacinthinus*), 105 x 265 mm



26 Common reed (*Phragmites australis*) and white-fronted goose (*Anser albifrons*), 90 x 250 mm



27 Common reed (*Phragmites australis*) and mallard duck (*Anas platyrhynchos*), 175 x 255 mm



28 Black-headed gull (*Chroicocephalus ridibundus*), 180 x 255 mm



29 China rose (*Rosa chinensis*) and canary (*Serinus canaria*), 185 x 255 mm



30 Japanese laurel (*Aucuba japonica*) and Eurasian tree sparrow (*Passer montanus*), 85 x 250 mm



[Back to Exhibitions](#)